



Permanent ultrasonic flow meter for water applications

## FLUXUS® F501 – Maintenance-free Ultrasonic Flow Meter for Water

Accurate – Reliable – Durable

Accurate and cost-efficient

Completely maintenance-free

Absolutely reliable

Robust design



avrorarm.ru  
+7 (495) 956-62-18



# Capturing every drop – Ideal water accountability with FLUXUS

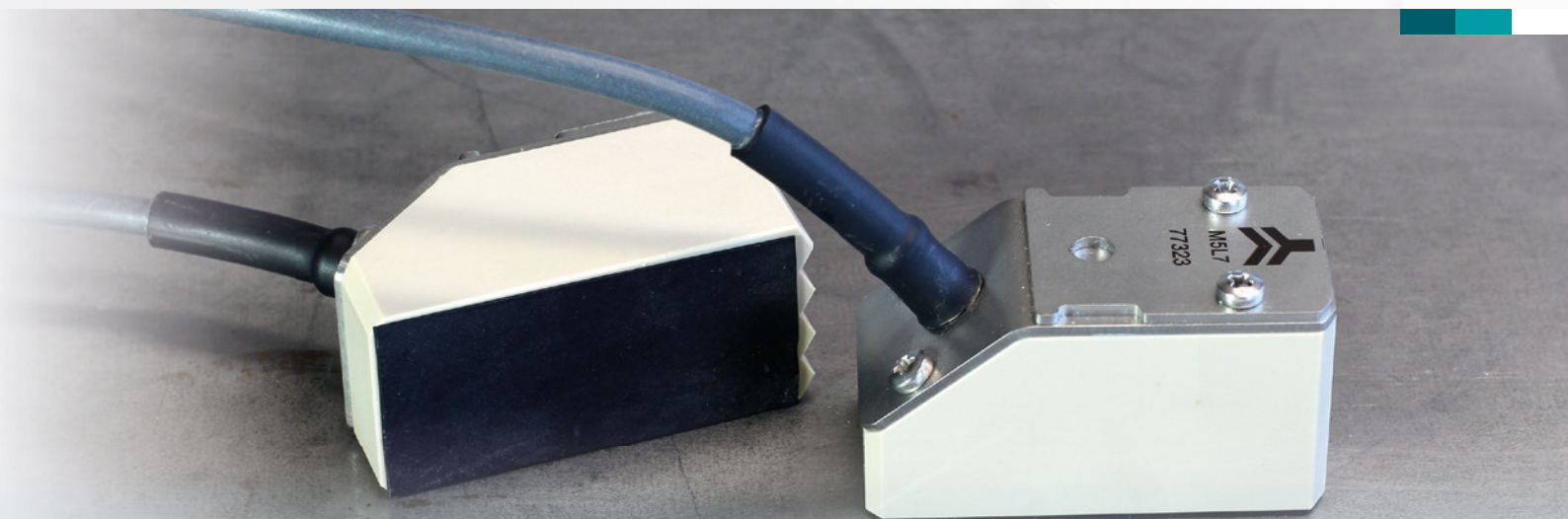
**Water conservation and water accountability is growing in necessity.** Smart water sub-metering with industry standard communication protocols are utilised to maintain better accountability of water usage. **FLEXIM's FLUXUS® F501 is the meter for these applications.** The ease of installation combined with high accuracy makes this the perfect meter to bring your water accountability into the future. **FLEXIM's unsurpassed low flow measurement will account for water flows too low for conventional meters to pick up - with FLEXIM nothing slips by.**

## Effortless and cost-efficient installation

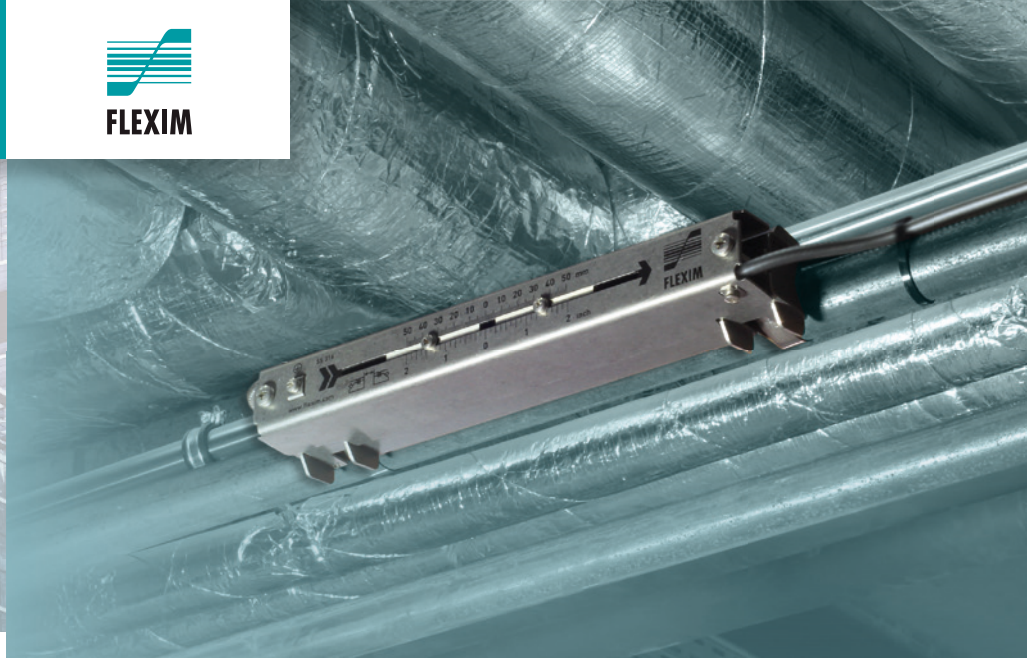
The FLUXUS® F501 is **installed with no need for pipe modifications and without any process interruption.** **Mounting and device set-up can be completed by just one person in a short time.** Thereafter, the FLUXUS® F501 delivers accurate, highly repeatable and long term stable measurements.

## Unrivalled measurement sensitivity and stability

The FLUXUS® F501 not only accurately and reliably measures over an extremely wide flow velocity range, it also features **excellent low flow capabilities** (down to 0.01 m/s), making it perfectly suitable for monitoring water supply and HVAC lines in buildings as well as measuring complete drinking water networks where low flow velocities - especially at night times - are common. Its strong signal output and advanced noise suppression technology make the **FLUXUS® F501 an ideal water flow meter, even on challenging materials and large pipes.**







## Advantages

- Water flow measurement without media contact - no wear and highly reliable
- Installation and set-up without pipe modification and line shut-down
- Permanent pipe wall coupling - no need for maintenance
- Robust design - highest protection against any mechanical stress
- Superior low flow capabilities
- Advanced noise suppression and strong signals for stable measurements even on challenging pipes

## Applications

- Monitoring of water supply lines in buildings (commercial & industrial)
- Monitoring of HVAC lines (incl. glycol / water mixtures)
- Monitoring of drinking water networks (also on lines buried underground)
- Measurements on any other water filled pipes
- All wastewater applications: influent, effluent, RAS, WAS, chemical injection

## Completely maintenance-free and reliable

FLEXIM was the first clamp-on ultrasonic flow meter manufacturer to overcome the need of gel as a coupling material between the ultrasonic transducer and the pipe. Coupling gel can dry out or be washed away with time when being flooded - operators thus have to regularly check and if necessary replenish the coupling gel. To do so, the transducers have to be taken from the pipe, covered with new gel, and then re-installed. Even experienced staff can make mistakes during this regular maintenance task.

**Due to its long-term stable permanent coupling pads the FLUXUS® F501 overcomes such cost intensive maintenance tasks and ensures absolute measurement reliability.**

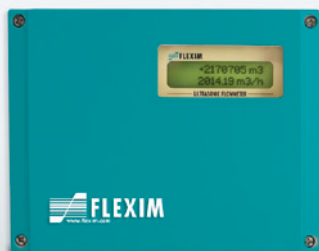
Furthermore, as of its contact-free measurement principle, **the FLUXUS® F501 shows no signs of wear**, something which can happen to conventional wetted flow meters, such as electromagnetic meters, where electrodes and inner liners corrode or deposit is building up, leading to measurement drift and increased maintenance efforts.

## Designed for challenging applications

The FLUXUS® F501 is offered with **high-quality built-to-last transducers and the most robust mounting system on the market**. All FLEXIM transducers are built without connection on the transducer head to protect them against water and dust ingress. The IP68 transducers are engineered to withstand a 20 meter water column submersion and can also be used for buried installations. The VARIOFIX mounting system is made of stainless steel and completely covers the sensors ensuring long-term excellent installation protection.

# FLEXIM

More than 25 years of experience  
in clamp-on ultrasonic flow measurement technology



## Technical Data FLUXUS® F501

Measurement uncertainty (volumetric flow rate) ±1.5 % v. MW ±0.01 m/s

Ex zone transmitter: only safe area

Power supply 230VAC, 12/24VDC

transducer for Ex zones: ---

transducer for pipe sizes range: 10mm ... 2400mm

transducer for temperature range: -40°C .... 100°C

Outputs: 1x 4-20mA active  
2x pulse/binary

Inputs: ---

Digital communication: Modbus RTU  
BACnet MS/TP  
M-Bus

For more detailed Information please download the Technical Specifications

